

# RSA Regional Selective Assistance

Grant offers accepted October – December 2022



## 2 REGIONAL SELECTIVE ASSISTANCE

---

The attached table details the Regional Selective Assistance (RSA) offers accepted in the three months to the end of December 2022. In this period 3 businesses in Scotland accepted an RSA grant offer totalling over £2.4 million. These offers relate to projects with planned investment of over £15 million, aimed at the planned creation and safeguarding of 112 jobs. Tier 3 accepted offers are marked with an \*.

Payment of RSA is made in instalments, typically over several years as job and capital expenditure targets are met. Not all projects will proceed, and nor do all accepted offers result in full payment, as projects are sometimes scaled down or abandoned before

payments are made. The figures quoted in the tables, therefore, represent the maximum grant potentially payable if the project is satisfactorily completed, and **not** the amount actually paid to date. All job numbers given in this report are firms' forecast figures and are subject to change depending on future economic conditions and other factors affecting the businesses concerned.



**Grant Offers Accepted**

**Norframe Ltd\***

Aberdeenshire

NEW JOBS  
**11.5**SAFEGUARDED JOBS  
**14.5**

GRANT OFFERED

**£750,000****The Door Centre Limited\***

Midlothian

NEW JOBS  
**7.0**SAFEGUARDED JOBS  
**18.5**

GRANT OFFERED

**£207,000****Board24 Limited**

North Lanarkshire

NEW JOBS  
**10.0**SAFEGUARDED JOBS  
**50.0**

GRANT OFFERED

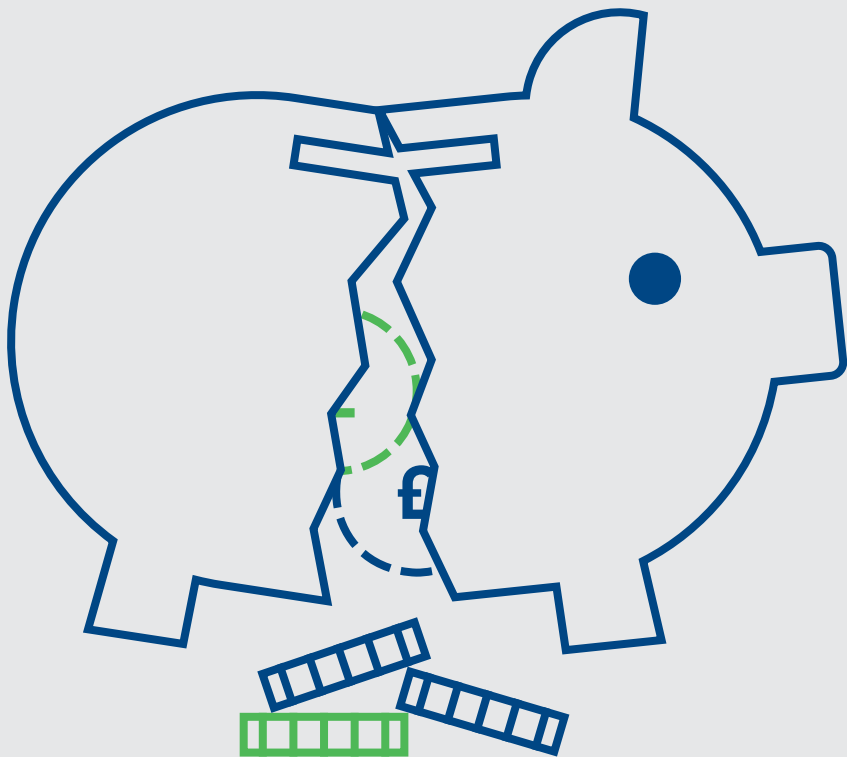
**£1,480,000**



# Payments

| Company Name                         | Amount Paid (£) |
|--------------------------------------|-----------------|
| The Urban Grocer Ltd                 | 49,500          |
| William Clark and Son (Parkgate) Ltd | 127,500         |
| FD Intelligence Ltd                  | 32,000          |
| eContact Services Ltd                | 75,000          |
| Phil MaCan Ltd                       | 40,000          |
| Ravensby Glass Company Ltd           | 125,000         |
| C R Smith Manufacturing Ltd          | 70,000          |
| Direct Soccer Ltd                    | 107,000         |
| Elcom Systems Ltd                    | 175,000         |
| Impact Laboratories Ltd              | 55,000          |
| Lochlie Construction Ltd             | 100,000         |
| James Boylan Safety (NI) Ltd         | 45,000          |
| Dukosi Ltd                           | 80,000          |
| J & M Murdoch & Son Ltd              | 100,000         |

| Company Name             | Amount Paid (£) |
|--------------------------|-----------------|
| Quipu TV Ltd             | 100,000         |
| Lochlie Construction Ltd | 50,000          |
| Nexus Packaging Ltd.     | 800,000         |
| Pict Offshore Ltd        | 100,000         |
| Bigtincan UK Ltd         | 60,000          |
| MRM Global Ltd           | 184,000         |
| Yes Recycling (Fife) Ltd | 95,000          |
| Newton Steel Framing Ltd | 100,000         |



# Recoveries



| Company Name                  | Amount Recovered (£) |
|-------------------------------|----------------------|
| Renovite Technologies Limited | 130,000              |

If you require this publication in an alternative format and/or language please contact the Scottish Enterprise Helpline on 0845 607 8787 to discuss your needs.

Scottish Enterprise  
Atrium Court  
50 Waterloo Street  
Glasgow  
G2 6HQ

**Helpline:** 0845 607 8787

[www.scottish-enterprise.com](http://www.scottish-enterprise.com)

